

Service Information

Mazda Motor Corporation

3-1, Shinchi, Fuchu-cho, Aki-gun
Hiroshima 730-8670, Japan
TEL : 81(82)287-5323
FAX : 81(82)287-5220

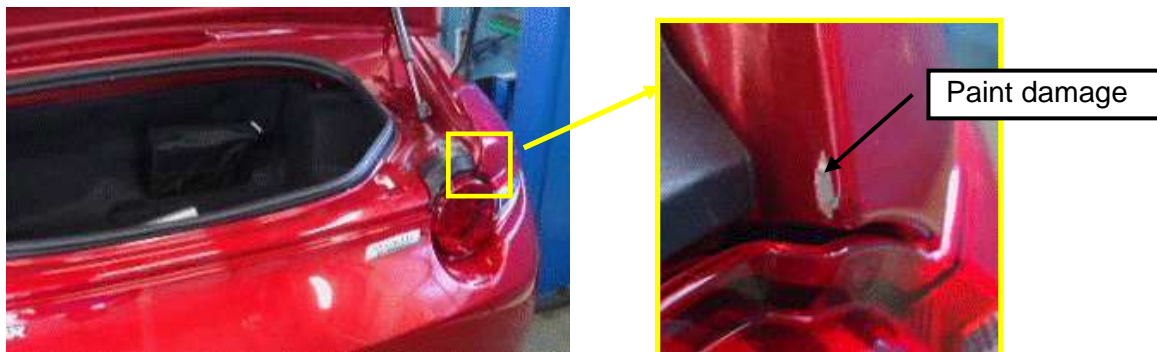


Category S	Technical	Ref. No. E013/15	Page 1 of 3
Coverage <input type="checkbox"/> Distributor only <input checked="" type="checkbox"/> Please inform your dealers		Date Issued August 27, 2015	
Please convey this information to your <input type="checkbox"/> Director <input checked="" type="checkbox"/> General Manager <input checked="" type="checkbox"/> Warranty Dept. <input checked="" type="checkbox"/> Parts Dept. <input checked="" type="checkbox"/> Training Dept. <input checked="" type="checkbox"/> Field Rep.		Date Revised	
Applicable Model MX-5 (ND)		Applicable Countries or Specifications Worldwide	

Subject: Possible Paint Damage to Trunk Lid Opening when removing Rear Combination Light [Service Note]

DESCRIPTION

When removing the rear combination light, there is a possibility that paint damage may occur on the trunk lid opening where sealant is applied. To prevent this, please follow the service note in this Service Information.

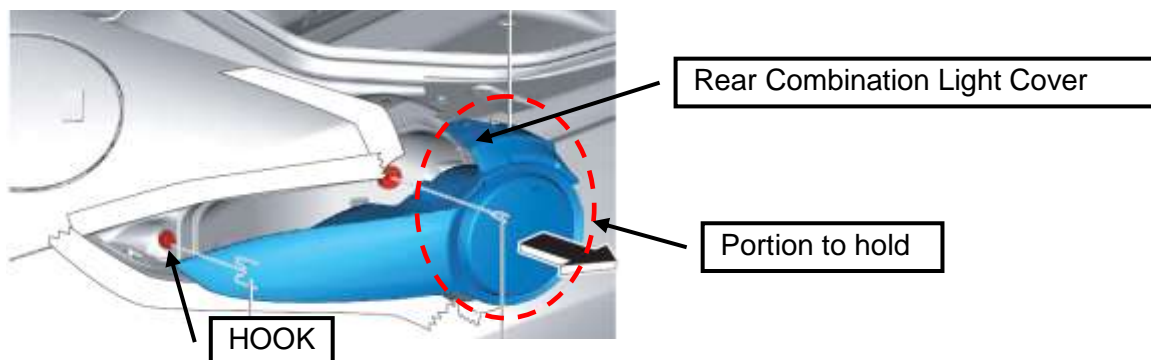


CAUSE

The rear combination light cover may warp toward and contact the trunk lid opening (sealant portion) if the combination light is pulled by holding the portion indicated in the figure to disengage the hook.

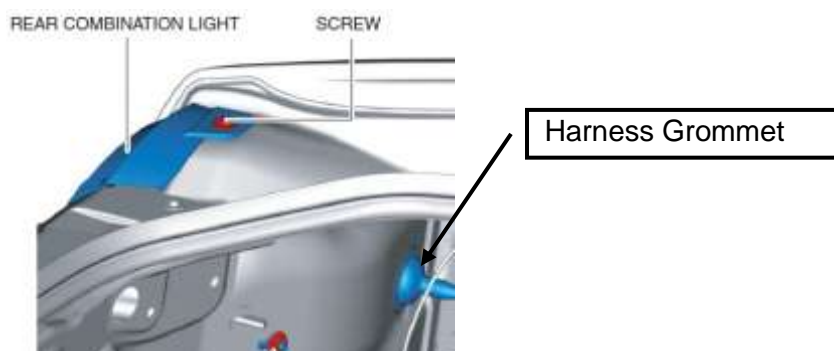
NOTE: There is no appropriate portion to hold and pull for disengaging the hook straight.

NOTE: Even if a protective tape is used, the paint may peel off when removing the tape if the sealant is cracked by the contact over the tape.



SERVICE NOTE

Disengage the hook by entering a finger through the hole for the harness grommet and pushing the backside of the rear combination light. For the details, please refer to the revision draft of the workshop manual as below.



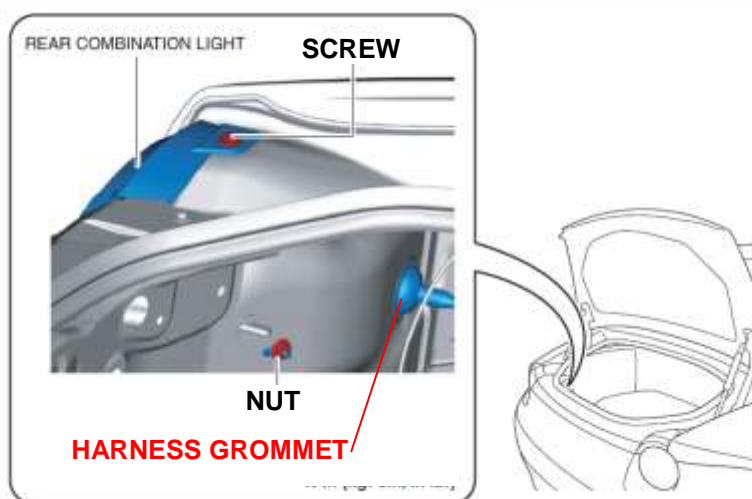
REAR COMBINATION LIGHT REMOVAL/INSTALLATION

This is a workshop manual revision draft. The information in red marked with the black bar will be revised.

Note

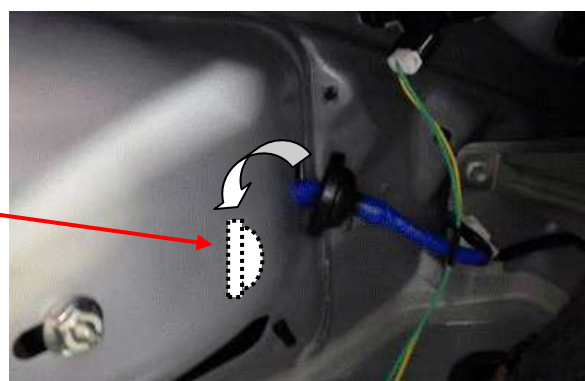
• Fogging or condensation on the inside of the rear combination lights may occur due to a natural phenomenon occurring as a result of a temperature difference between the interior and exterior of the combination lights. However, it has no effect on the light performance because the temperature inside the rear combination lights rises after illuminating a rear turn light or a period of time has elapsed.

1. Disconnect the negative battery cable. (See NEGATIVE BATTERY CABLE DISCONNECTION/CONNECTION.)
2. Remove the trunk end trim. (See TRUNK END TRIM REMOVAL/INSTALLATION.)
3. Partially peel back the trunk side trim. (See TRUNK SIDE TRIM REMOVAL/INSTALLATION.)
4. Remove the screw.



5. Remove the nut.
6. Remove the harness grommet and drop it in the rear combination light.

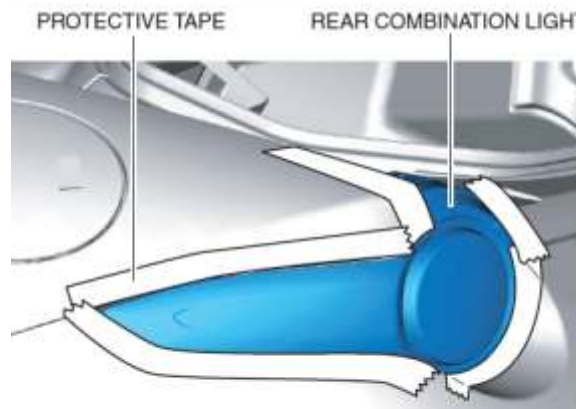
Harness Grommet
Remove and drop it in the
combination light.



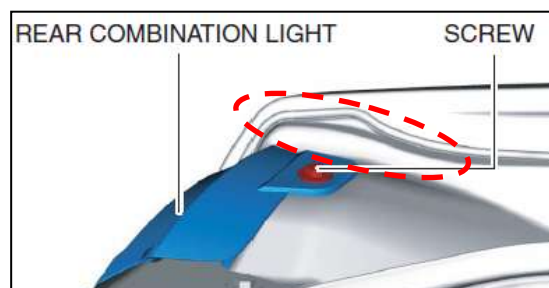
Caution

- When removing the rear combination light from the body, it could interfere with the body and cause scratching or damage to the body. When removing the rear combination light from the body, apply protective tape to the body.

7. To prevent scratches or damage, affix protective tape to the position shown in the left figure.



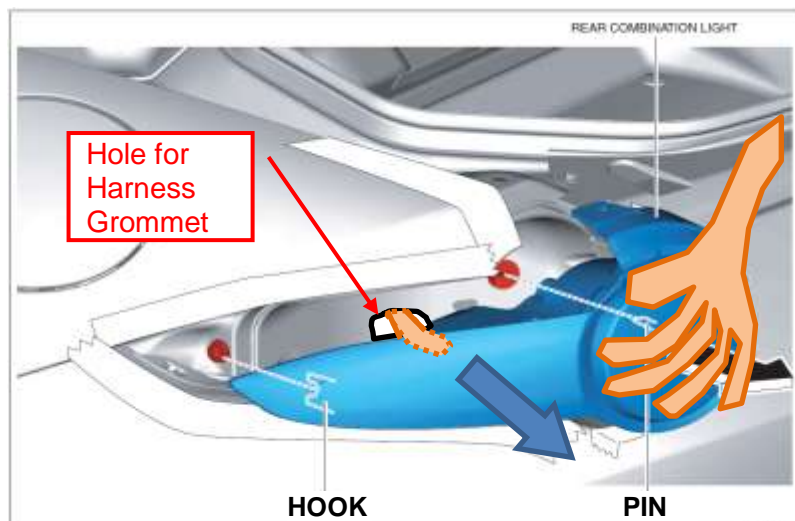
Affix three layers of protective tape to the portion shown in the right figure.



Caution

DO NOT use a protective tape having strong adhesive force, or the paint may peel off when removing the protective tape.

8. While holding the circle lens portion of the rear combination light by one hand, push the backside of the rear combination light with other hand's finger through the hole that the harness grommet has been removed to disengage the hook. After the hook has been disengaged, pull the combination light to the direction of the arrow shown in the figure to remove the pin.



9. Pull out the rear combination light short-cord from the hook.